



ESTATE AGENTS



Clock House Mead, Oxshott, Leatherhead, Surrey

Asking Price £895,000

# Clock House Mead, Oxshott, Leatherhead, Surrey

Introducing this charming semi-detached three-bedroom house, situated in a prime and convenient location.

Boasting a modern and stylish design, this property offers a bright and inviting atmosphere throughout. The well-maintained garden provides a secluded space to relax and enjoy the outdoors.

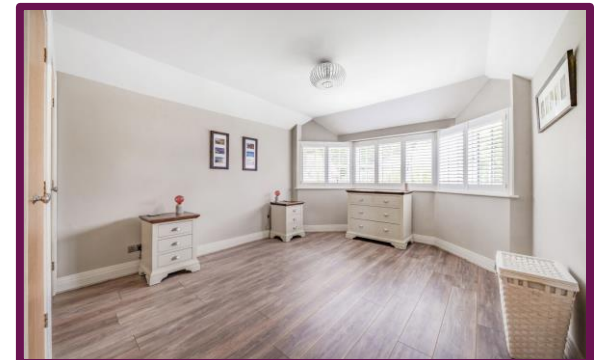
The interior is both homely and spacious, ideal for comfortable family living.

With easy access to local amenities and transport links, this property offers the perfect balance of a quiet residential area with convenient living.

Don't miss out on the opportunity to make this lovely house your home. Contact us today to arrange a viewing and experience the warmth and charm this property has to offer.

Freehold  
Council tax band F

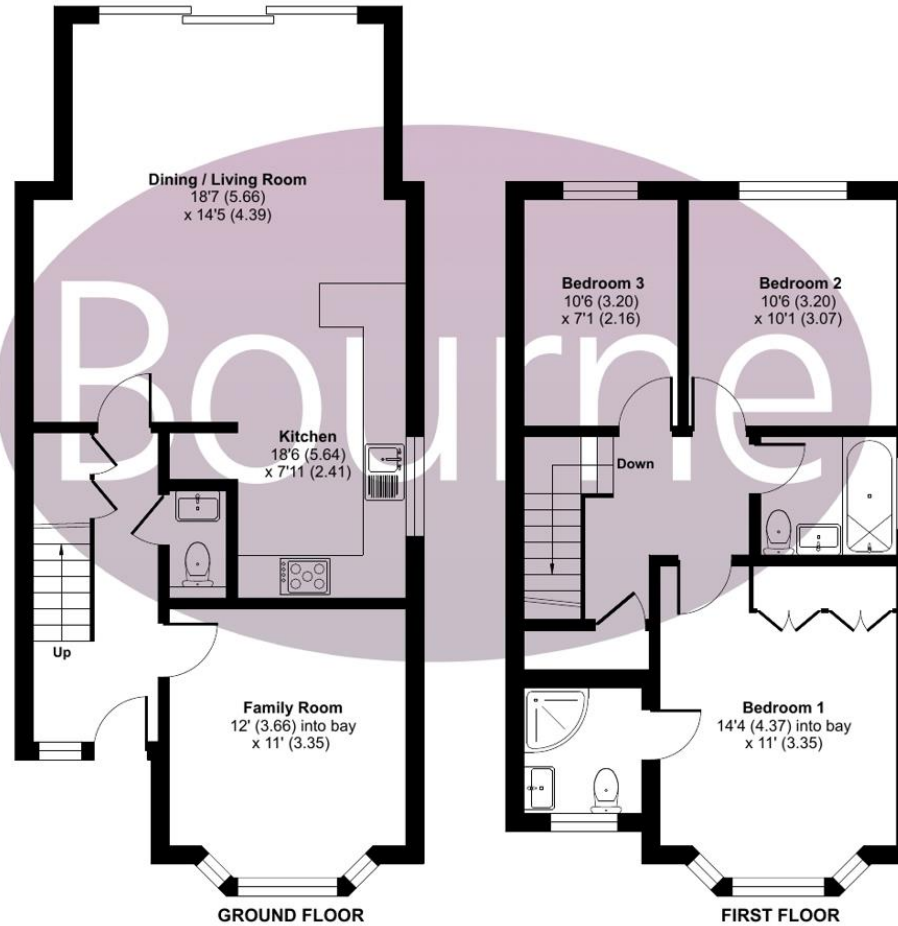
- Offered with no onward chain
- Excellent position
- Three bedrooms
- Immaculately presented throughout
- Driveway parking
- Village location
- Close to fantastic amenities
- Open plan kitchen family area



## Clock House Mead, Oxshott, Leatherhead, KT22

Approximate Area = 1143 sq ft / 106.1 sq m

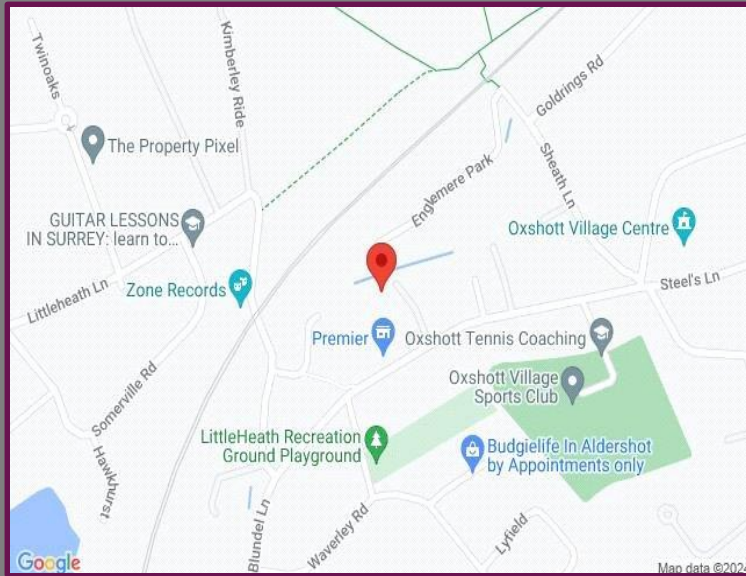
For identification only - Not to scale



Floor plan produced in accordance with RICS Property Measurement Standards incorporating International Property Measurement Standards (IPMS2 Residential). © n̄cheom 2024. Produced for Bourne Estate Agents. REF: 1138727

# Location

Oxshott is a small, beautiful affluent village in Surrey, England, located about 20 miles southwest of London. It is situated in the borough of Elmbridge, between the larger towns of Leatherhead and Esher. Oxshott is known for its beautiful scenery, including heathland, woodland, and several lakes it is served by a number of excellent schools, both state and private. The state schools in the village are The Royal Kent and Reed's School private being Danes Hill. The nearest airports are Heathrow Airport and Gatwick Airport. Oxshott has several amenities, including a village green, a deli, coffee shop, post office, two salons, pharmacy, two excellent pubs. The village is also home to Oxshott Village Sports Club, a cricket club, and a tennis club. It is a great place to live for those who are looking for a peaceful and secluded lifestyle.



Energy Efficiency Rating		
	Current	Potential
Very energy efficient - lower running costs		
(92+) <b>A</b>		
(81-91) <b>B</b>		<b>87</b>
(69-80) <b>C</b>		
(55-68) <b>D</b>	<b>68</b>	
(39-54) <b>E</b>		
(21-38) <b>F</b>		
(1-20) <b>G</b>		
Not energy efficient - higher running costs		
<b>England, Scotland &amp; Wales</b>	EU Directive 2002/91/EC	

We aim to make our particulars both accurate and reliable but they are not guaranteed, nor do they form part of an offer or contract.

If you require clarification of any points then please contact us especially if you are travelling some distance to view.

Please note that appliances and heating systems have not been tested and therefore no warranties can be given as to their good working order.



A refreshing choice...

**COBHAM: 13 Oakdene Parade, Cobham, Surrey, KT11 2LR**

**Tel: 01932 864242 | Email: cobham@bourneestateagents.com**

**Web: www.Bourneestateagents.com**